

Petites Notes N°11

COORDINATION POUR LES DÉBUTANTS

Pascal Lawrynowicz

Exercices A



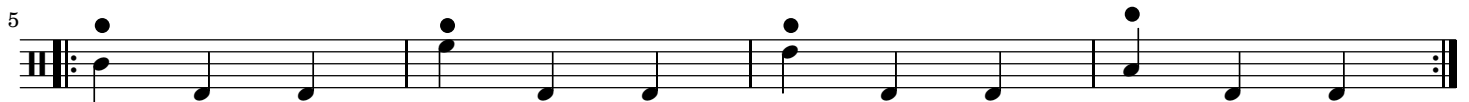
Exercices B



Exercices C



Exercices D



Petites Notes N°11

Exercices E

Exercices E consists of three staves of music in 4/4 time. The first staff (measures 1-4) features a sequence of chords: G2-A2, G2-A2-B2, G2-A2-B2-C3, G2-A2-B2-C3, G2-A2-B2-C3, G2-A2-B2-C3, G2-A2-B2-C3, and G2-A2-B2-C3. The second staff (measures 5-8) features a sequence of chords: G2-A2-B2, G2-A2-B2-C3, G2-A2-B2-C3, G2-A2-B2-C3, G2-A2-B2-C3, G2-A2-B2-C3, G2-A2-B2-C3, and G2-A2-B2-C3. The third staff (measures 9-12) features a sequence of chords: G2-A2, G2-A2-B2, G2-A2-B2-C3, G2-A2-B2-C3, G2-A2-B2-C3, G2-A2-B2-C3, G2-A2-B2-C3, and G2-A2-B2-C3. Measure 13 is a final chord G2-A2-B2-C3.

Exercices F

Exercices F consists of three staves of music in 5/4 time. The first staff (measures 1-4) features a sequence of chords: G2-A2-B2, G2-A2-B2-C3, G2-A2-B2-C3, G2-A2-B2-C3, G2-A2-B2-C3, G2-A2-B2-C3, G2-A2-B2-C3, and G2-A2-B2-C3. The second staff (measures 5-8) features a sequence of chords: G2-A2-B2, G2-A2-B2-C3, G2-A2-B2-C3, G2-A2-B2-C3, G2-A2-B2-C3, G2-A2-B2-C3, G2-A2-B2-C3, and G2-A2-B2-C3. The third staff (measures 9-12) features a sequence of chords: G2-A2, G2-A2-B2, G2-A2-B2-C3, G2-A2-B2-C3, G2-A2-B2-C3, G2-A2-B2-C3, G2-A2-B2-C3, and G2-A2-B2-C3. Measure 13 is a final chord G2-A2-B2-C3.

Exercices G

Exercices G consists of three staves of music in 6/4 time. The first staff (measures 1-4) features a sequence of chords: G2-A2-B2, G2-A2-B2-C3, G2-A2-B2-C3, G2-A2-B2-C3, G2-A2-B2-C3, G2-A2-B2-C3, G2-A2-B2-C3, and G2-A2-B2-C3. The second staff (measures 5-8) features a sequence of chords: G2-A2-B2, G2-A2-B2-C3, G2-A2-B2-C3, G2-A2-B2-C3, G2-A2-B2-C3, G2-A2-B2-C3, G2-A2-B2-C3, and G2-A2-B2-C3. The third staff (measures 9-12) features a sequence of chords: G2-A2, G2-A2-B2, G2-A2-B2-C3, G2-A2-B2-C3, G2-A2-B2-C3, G2-A2-B2-C3, G2-A2-B2-C3, and G2-A2-B2-C3. Measure 13 is a final chord G2-A2-B2-C3.